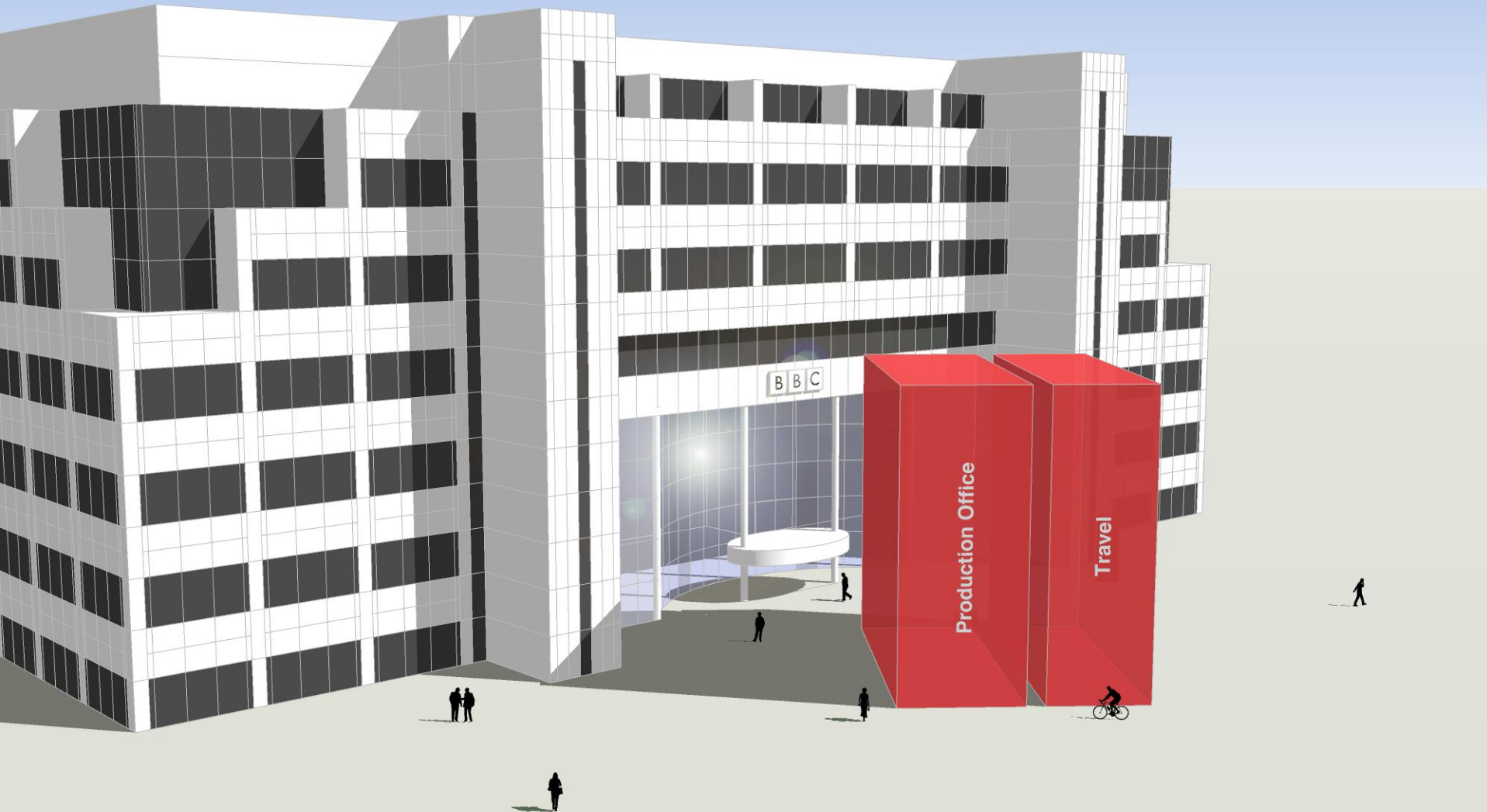


# Slide sequence showing carbon footprint of one hour of BBC's TV production

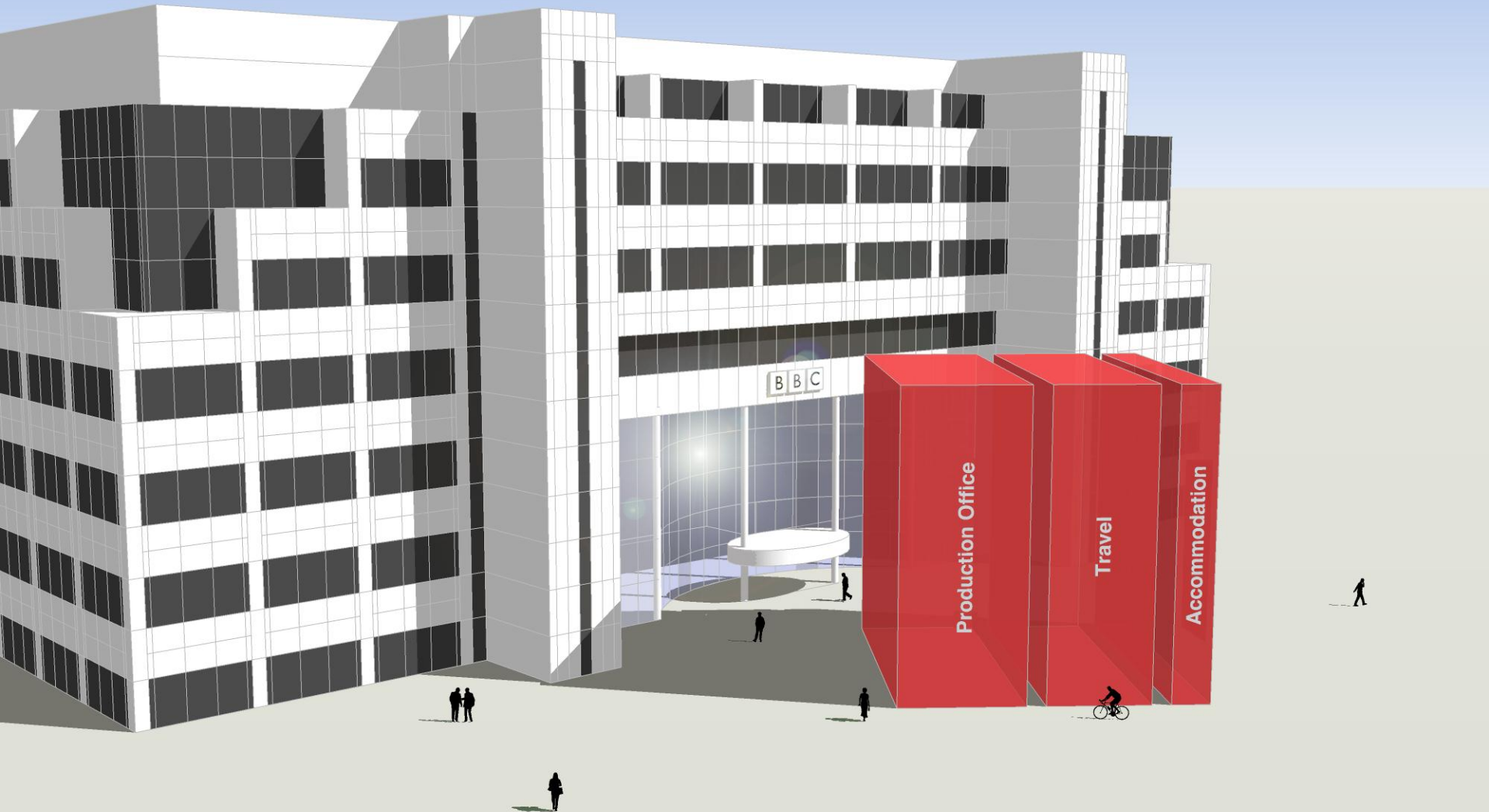




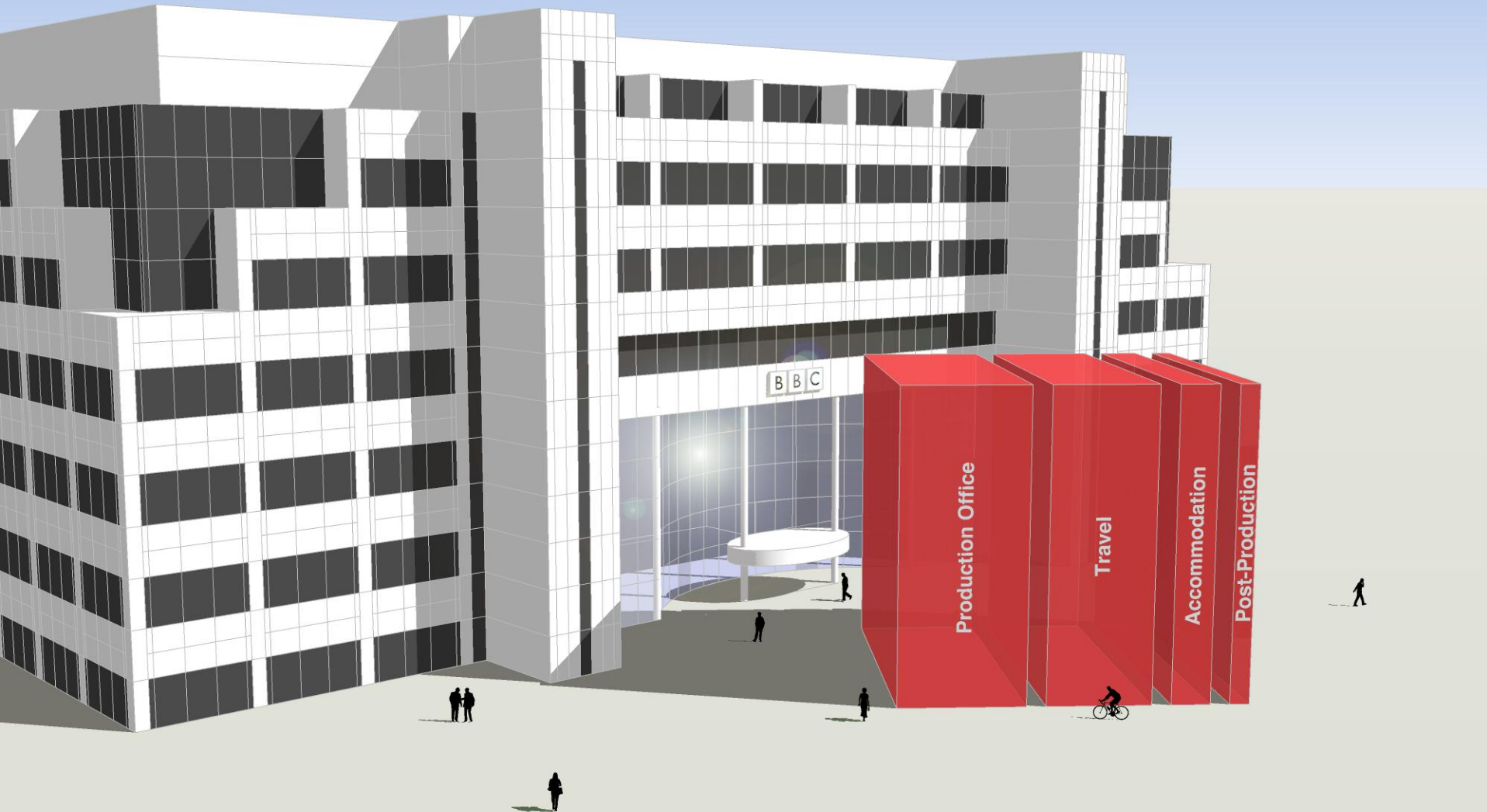
Production Office: 3.3 tonnes (40%)



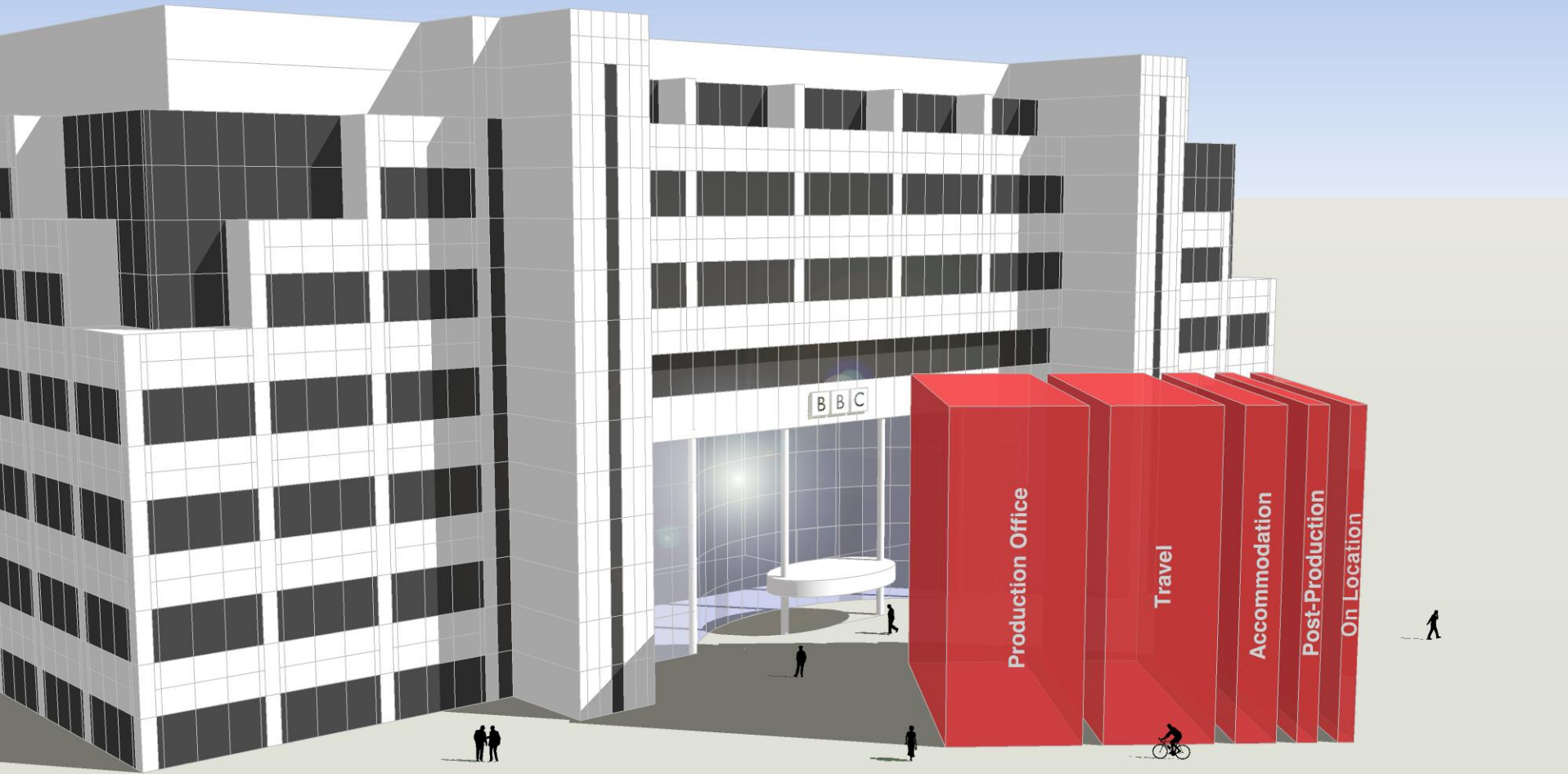
Travel: 2.7 tonnes (33%)



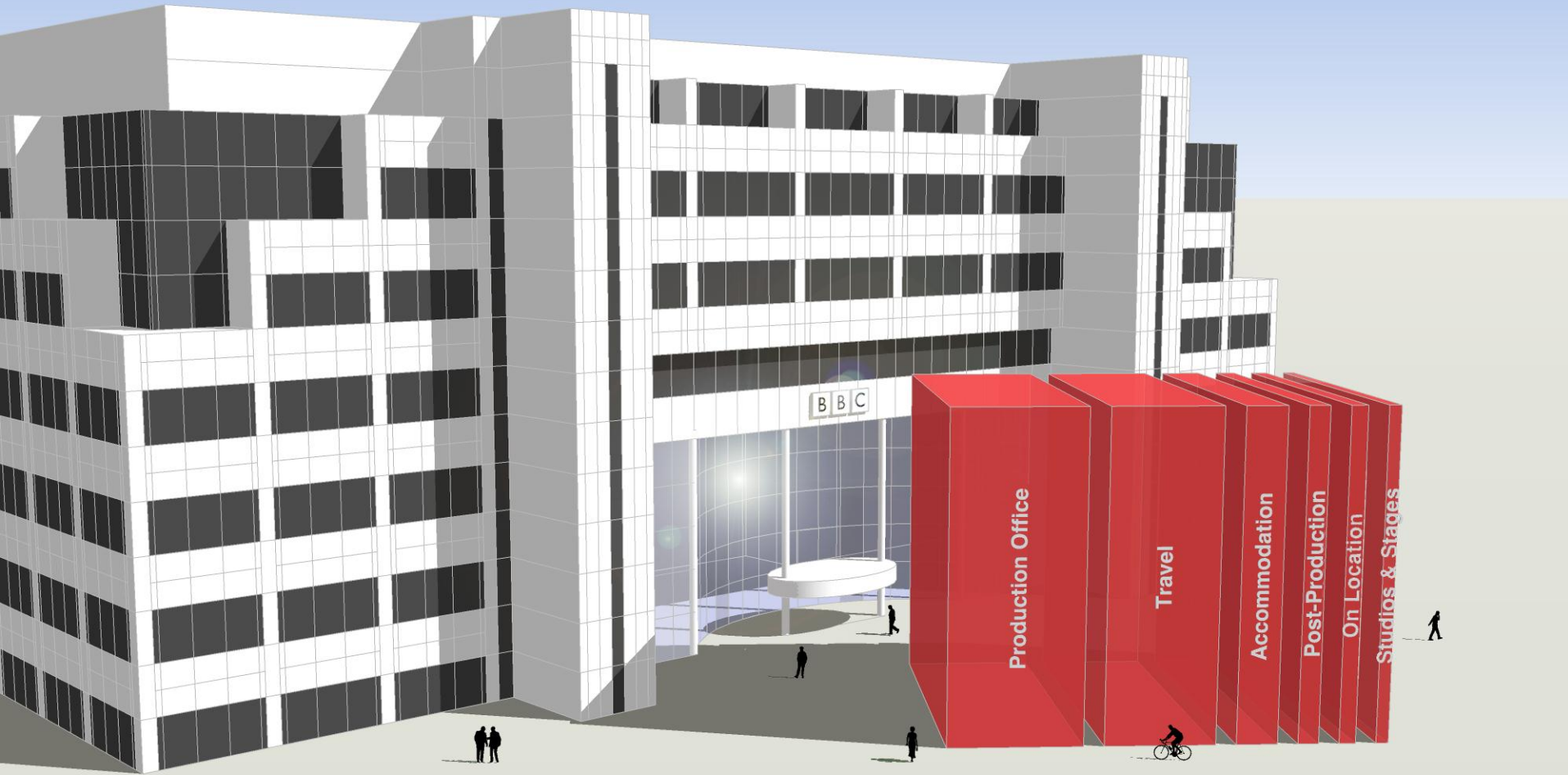
Accommodation: 1.0 tonnes (12%)



Post-Production: 0.5 tonnes (6%)



On-location: 0.4 tonnes (5%)



Studios & Stages: 0.3 tonnes (4%)



8.2 tonnes of carbon dioxide would fill a cube over 16 metres tall